

TAPO BUSINESS PARK

4590-4596 ISH DRIVE | SIMI VALLEY, CA

Professionally developed,
owned & managed by:

**WEST AMERICA
CONSTRUCTION**



GRANT FULKERSON, SIOR

Principal
818.304.4956
gfulkerson@lee-re.com
www.fulkerson-re.com
License ID # 01483890

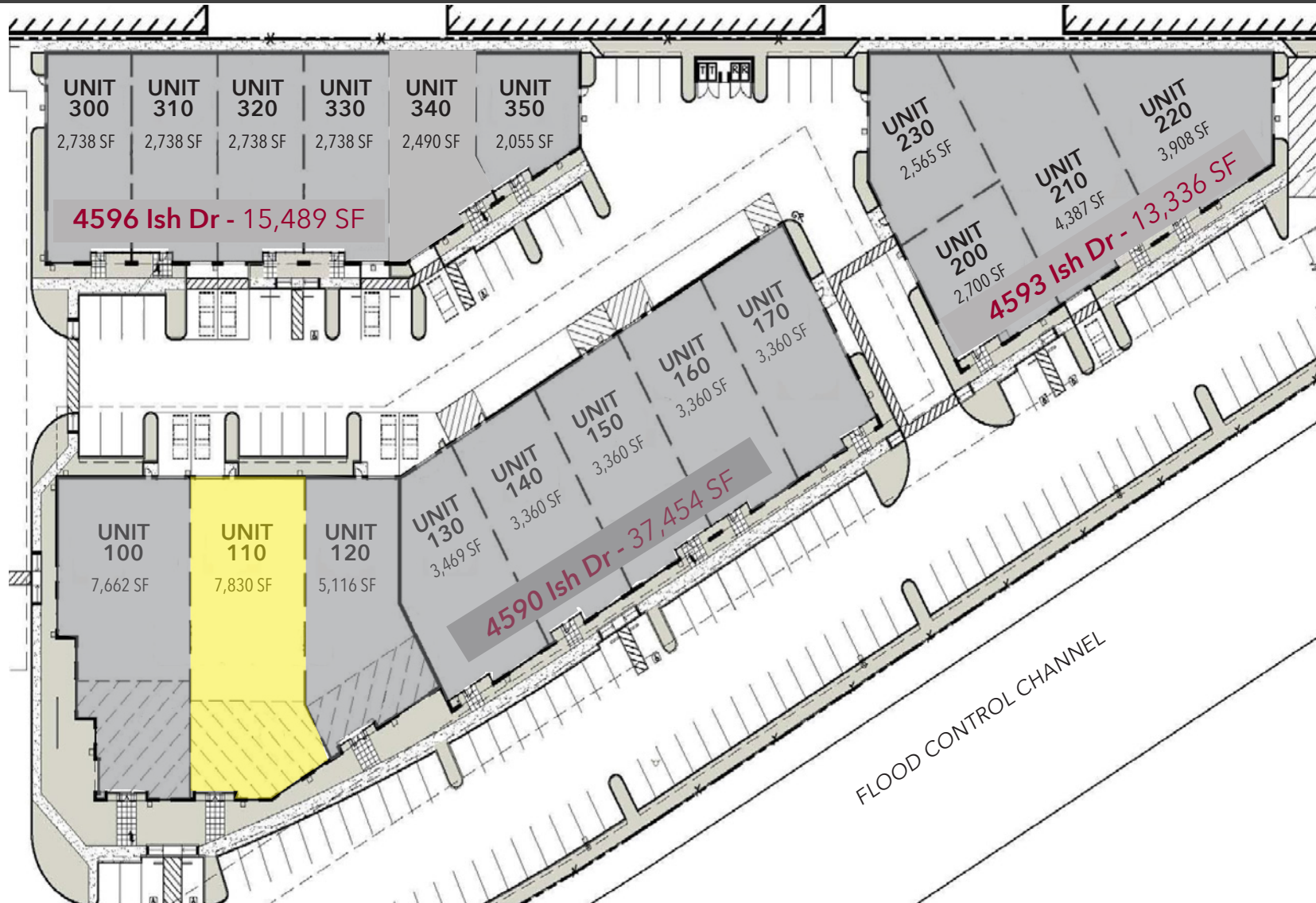
MIKE TINGUS

President
818.223.4380
mtingus@lee-re.com
www.miketingus.com
License ID # 01013724



COMMERCIAL REAL ESTATE SERVICES
No warranty or representation is made to the
accuracy of the foregoing information. Terms of
sale or lease and availability are subject to change
or withdrawal without notice. CID #01191898

SITE PLAN



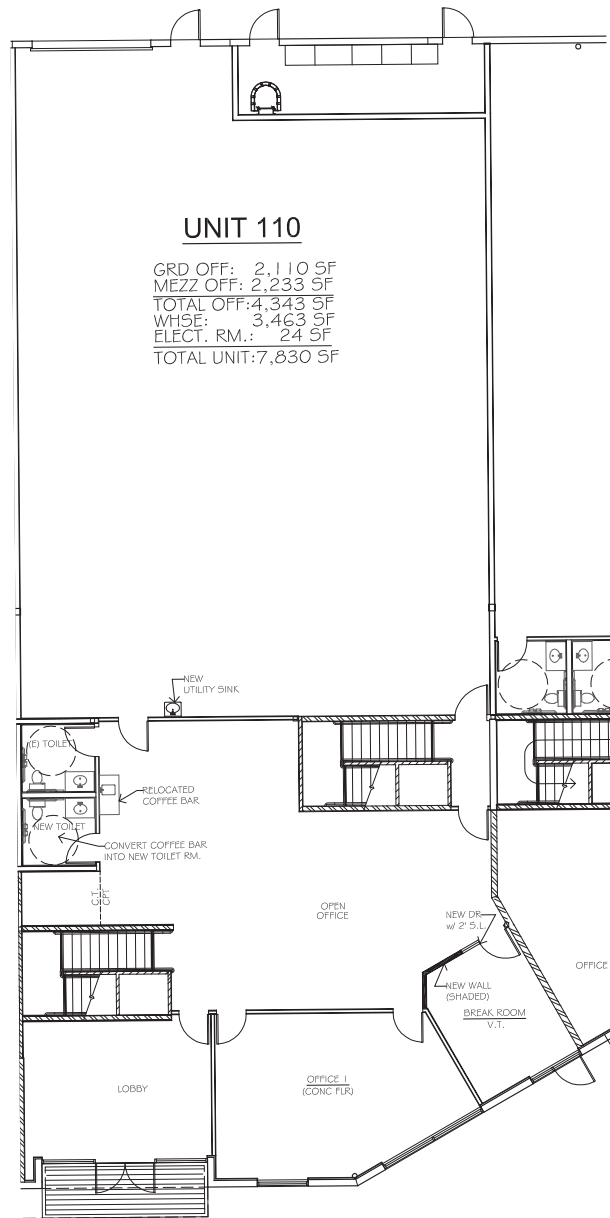
PROPERTY HIGHLIGHTS

- PRISTINE BUSINESS PARK ENVIRONMENT
- MAJESTIC MOUNTAIN VIEWS
- ABUNDANT PARKING (3/1000 POSSIBLE)
- SCENIC MOUNTAIN VIEWS
- HIGH END IMPROVEMENTS

4590 Ish Dr - 37,454 SF
4593 Ish Dr - 13,336 SF
4596 Ish Dr - 15,489 SF

 - AVAILABLE

FLOOR PLANS

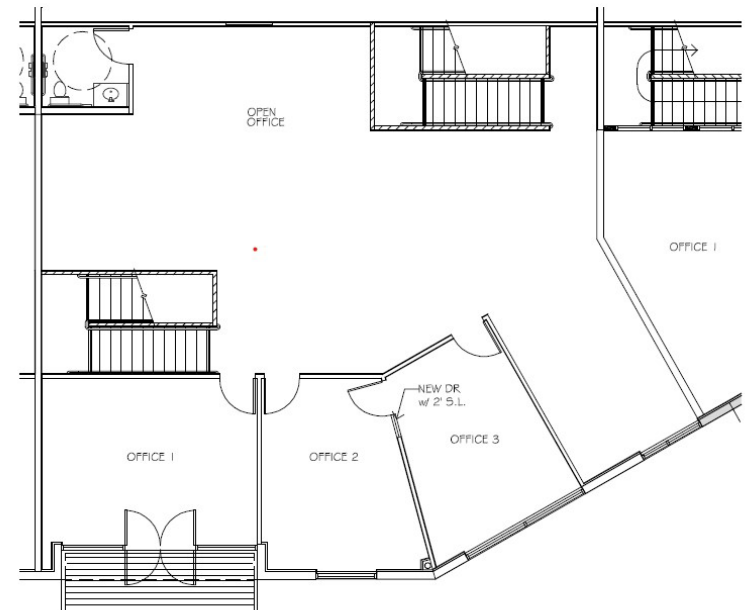


GROUND FLOOR PLAN

6-5-12

4590 ISH DR - UNIT 110

TOTAL SIZE	7,830 SF
GROUND FLOOR	2,110 SF
MEZZANINE	2,233 SF
WAREHOUSE	3,463 SF
ASKING RATE	\$1.60 PSF Gross
CLEAR HEIGHT	24' Minimum
LOADING	(1) Ground Level



MEZZANINE PLAN

AERIAL VIEW



4593 ISH DRIVE
SIMI VALLEY, CA

4590 ISH DR
SIMI VALLEY, CA

4596 ISH DRIVE
SIMI VALLEY, CA

Runway St

Ish Dr

GRANT FULKERSON, SIOR

Principal
818.449.4401
gfulkerson@lee-re.com
www.fulkerson-re.com
License ID # 01483890

MIKE TINGUS

President
818.223.4380
mtingus@lee-re.com
www.miketingus.com
License ID # 01013724

Lee & Associates® - LA North/Ventura, Inc.
Corporate ID #01191898
A Member of the Lee & Associates Group of Companies
5707 Corsa Avenue, Suite 200
Westlake Village, CA 91362
P: 818-223-4388 F: 818-591-1450
www.lee-associates.com

