



9207 ETON AVENUE CHATSWORTH | CALIFORNIA

SCOTT CASWELL, SIOR

Principal
818.266.7772
scaswell@lee-re.com
DRE 00853607

ERICA BALIN

Managing Director
818.444.4912
ebalin@lee-re.com
DRE 01481476

No warranty or representation is made to the accuracy of the foregoing information. Terms of sale or lease and availability are subject to change or withdrawal without notice. CID #01191898



**LEE &
ASSOCIATES**

COMMERCIAL REAL ESTATE SERVICES



THE OFFERING

Prime Industrial Sublease Opportunity in Chatsworth

Position your business in one of the most sought-after industrial hubs in the San Fernando Valley. 9207 Eton Avenue presents an exceptional sublease opportunity, offering flexibility, utility, and visibility for companies seeking functional space in a strategic location.

BUILDING SPECIFICATIONS

AVAILABLE	21,790 SF
CLEAR HEIGHT	18'
HVAC	100% (office & warehouse)
SPRINKLER SYSTEM	Yes
GRADE-LEVEL DOORS	2 12' x 14'
PARKING	44 Stalls
POWER	800A 120/240V
ZONING	LA-MR2

PROPERTY DETAILS

- Beautiful Interior Plan - Top of the Line Finishes
- Great Cubic Height - 18'
- 100% HVAC
- Ideal for: Warehouse/Distribution, Manufacturing, Flex/R&D, or Cosmetic Operations
- Part of a well-established industrial park with access to major freeways and local logistics infrastructure

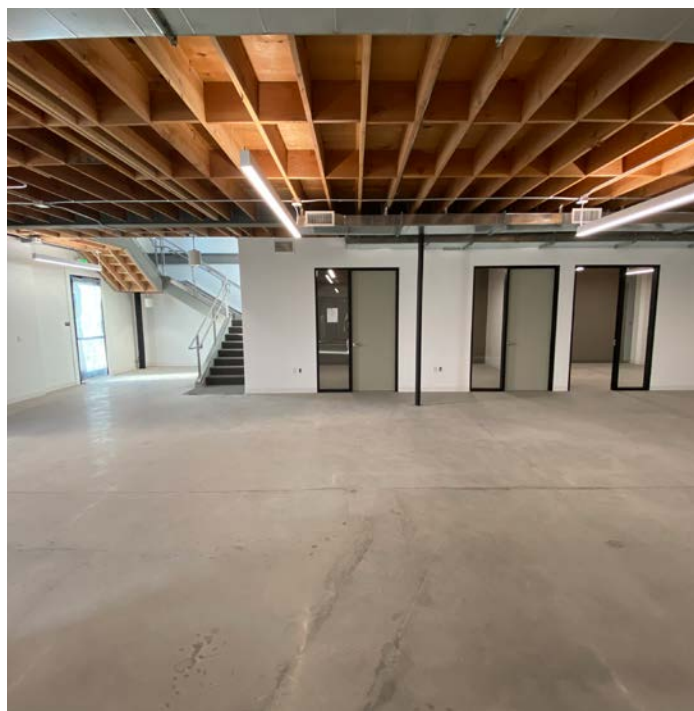
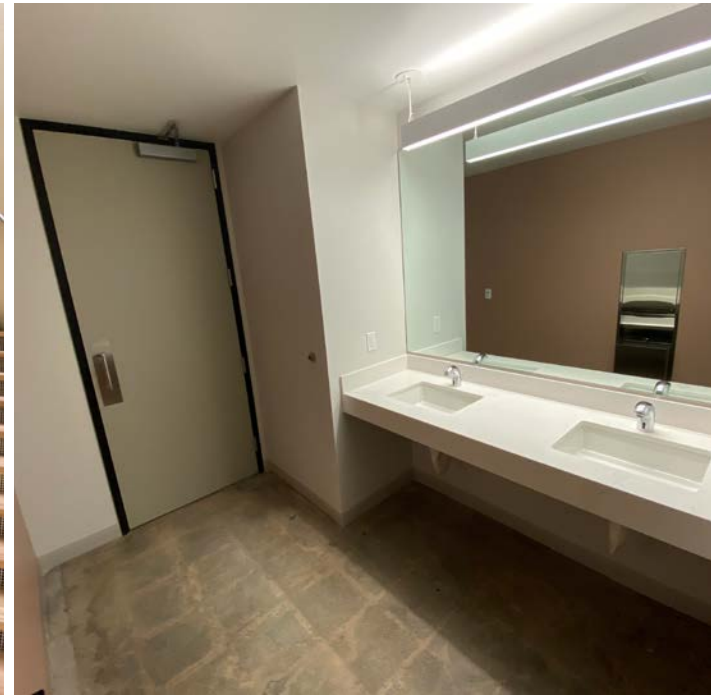
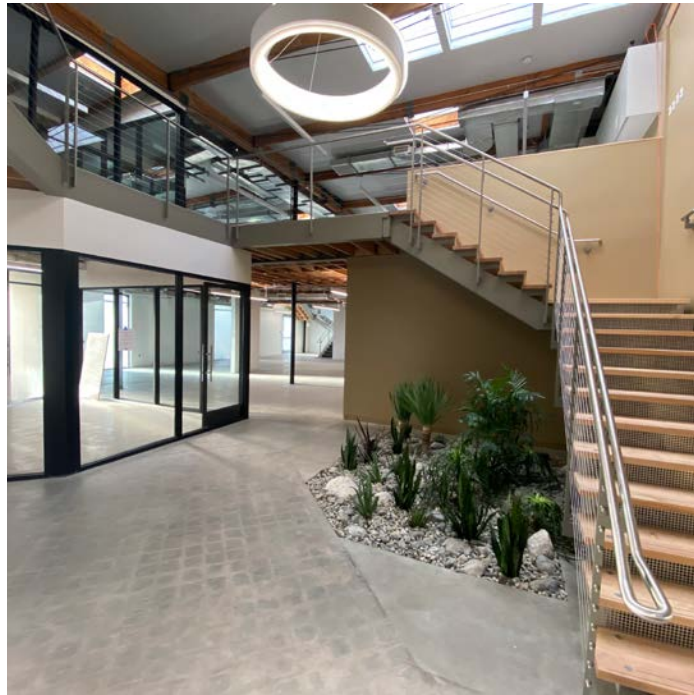


PROPERTY OVERVIEW

PROPERTY PHOTOS

PLANS

AERIALS





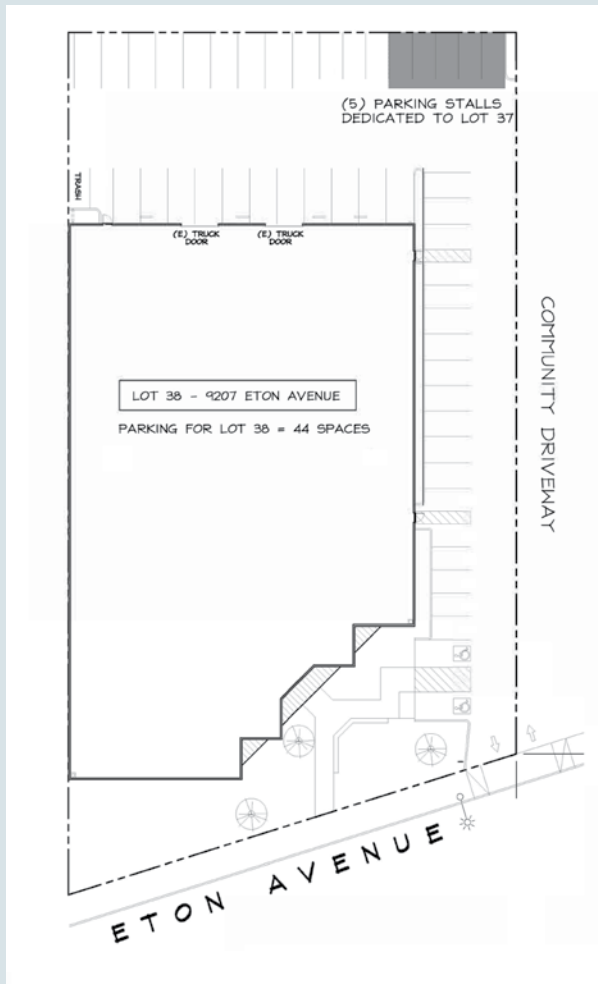
PROPERTY OVERVIEW

PROPERTY PHOTOS

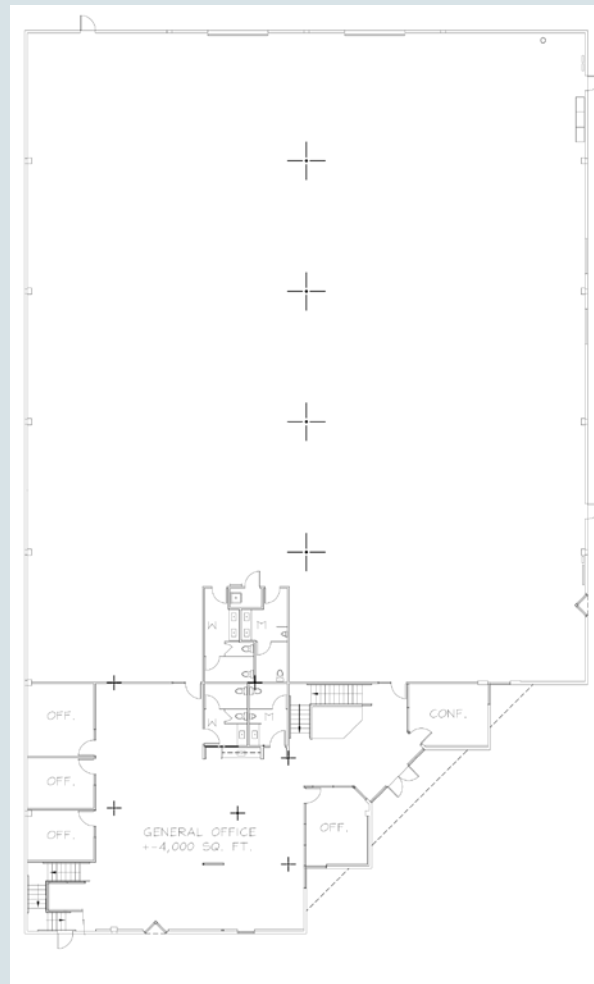
PLANS

AERIALS

SITE PLAN



FIRST FLOOR



SECOND FLOOR



9207 ETON AVENUE



PROPERTY OVERVIEW

PROPERTY PHOTOS

PLANS

AERIALS





PROPERTY OVERVIEW

PROPERTY PHOTOS

PLANS

AERIALS



SCOTT CASWELL, SIOR

Principal
818.266.7772
scaswell@lee-re.com
DRE 00853607

ERICA BALIN

Managing Director
818.444.4912
ebalin@lee-re.com
DRE 01481476

No warranty or representation is made to the accuracy of the foregoing information. Terms of sale or lease and availability are subject to change or withdrawal without notice. CID #01191898



**LEE &
ASSOCIATES**

COMMERCIAL REAL ESTATE SERVICES