



# FOR LEASE CALABASAS, CA

PRESENTED BY:  
SCOTT CASWELL, SIOR & ERICA BALIN

LEE & ASSOCIATES – LA NORTH/VENTURA, INC.

No warranty or representation is made to the accuracy of the foregoing information. Terms of sale or lease and availability are subject to change or withdrawal without notice.

# SITE PLAN





±1,700 SF

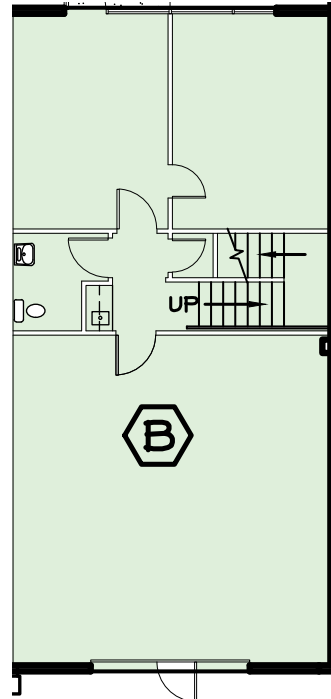
±2,750 SF



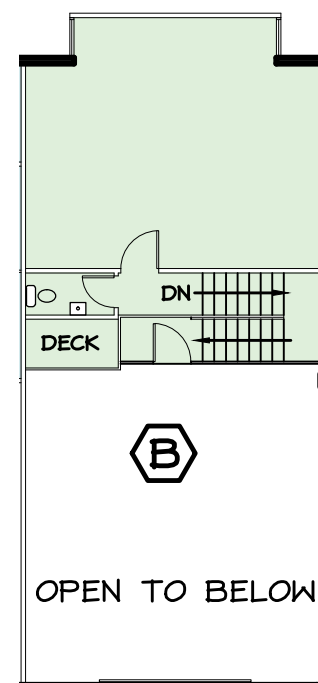
# AERIAL OVERVIEW

# PROPERTY DETAILS

5115 DOUGLAS FIR ROAD, CALABASAS, CA – COUNTY OF LOS ANGELES



FIRST FLOOR



2ND FLOOR



LOADING  
REAR ROLL UP DOOR

CLEAR HEIGHT  
14 FEET

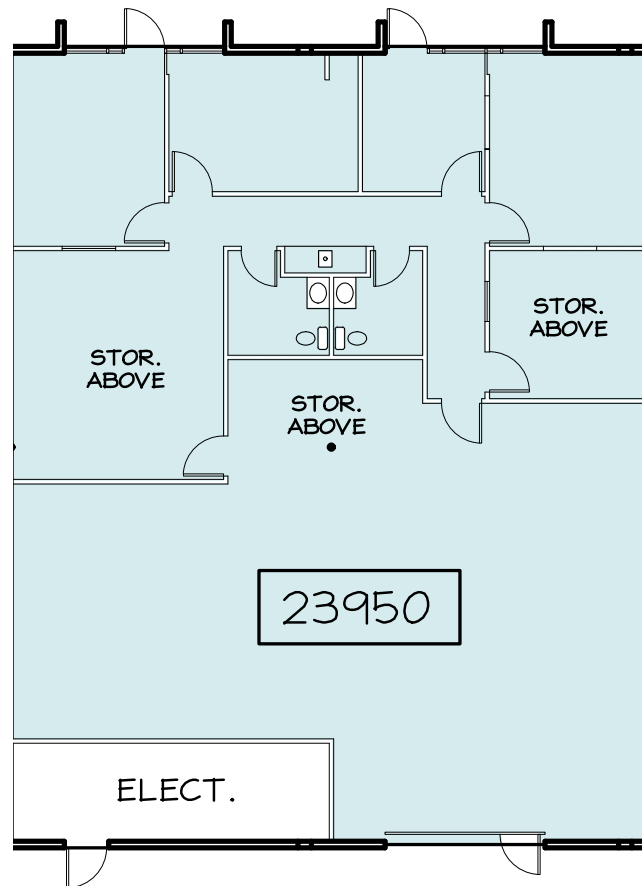
LEASE RATE  
\$3,825 MG/MO

SIZE  
±1,700 SF

AVAILABLE  
NOW

# PROPERTY DETAILS

23950 VENTURA BLVD, CALABASAS, CA – COUNTY OF LOS ANGELES



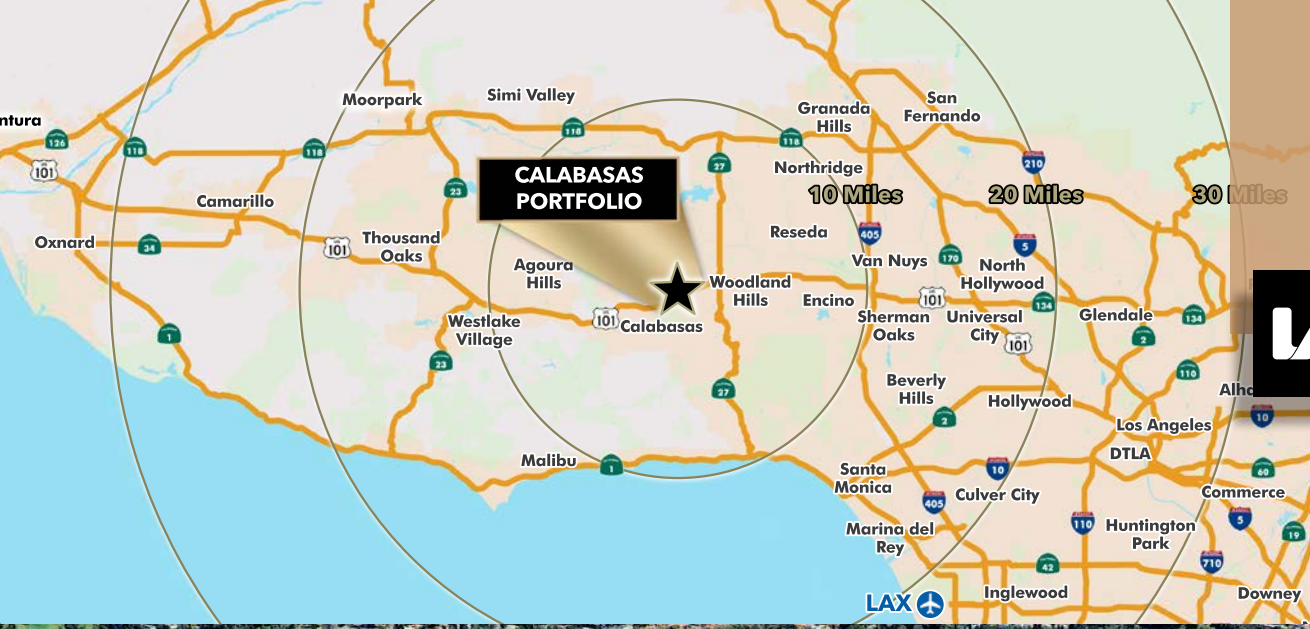
LOADING  
REAR ROLL UP DOOR

CLEAR HEIGHT  
14 FEET

LEASE RATE  
\$6,188 MG/MO

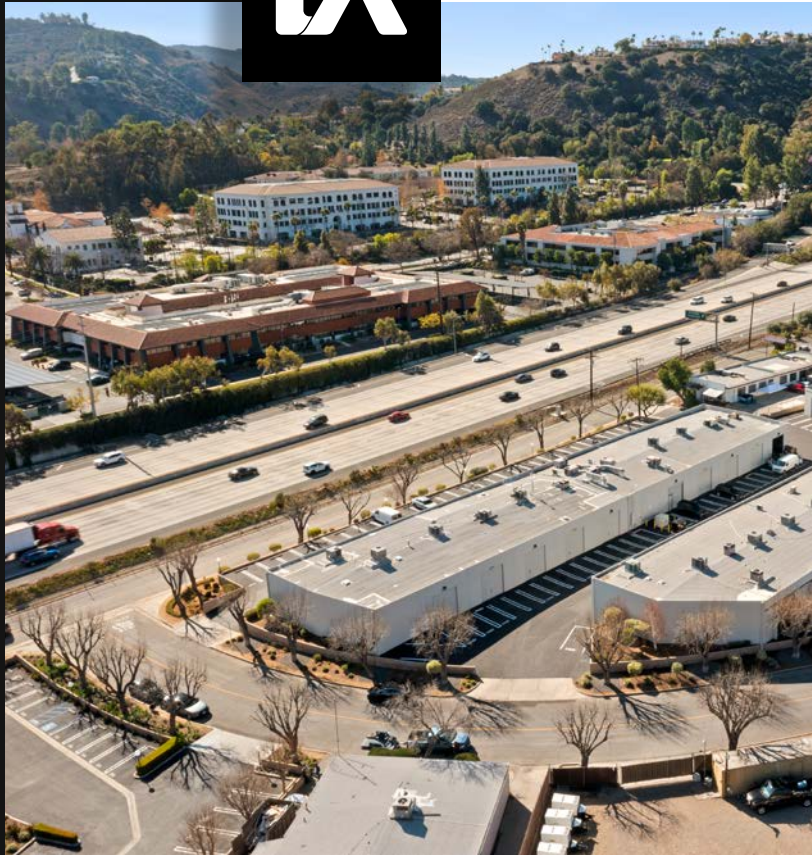
SIZE  
±2,750 SF

AVAILABLE  
NOW



# AMENITIES & LOCATOR MAP





## FOR INQUIRIES, PLEASE CONTACT

### **SCOTT CASWELL, SIOR**

Principal

(c) 818.266.7772

(o) 818.444.4911

scaswell@lee-re.com

CA DRE #: 00853607

### **ERICA BALIN**

Managing Director

(c) 805.490.9908

(o) 818.444.4911

ebalin@lee-re.com

CA DRE #: 01481476